

IT SIMPLY WORKS.

CONNEX DIGITAL ADAS

// The solution that completely changes the maintenance of ADAS systems

THE
ORIGINAL
REVOLUTIONARY
SYSTEM

TIME
SAVING
UP TO
80% (*)



to be used in combination with
CONNEX BT / SMART (not included)



CONNEX DIGITAL ADAS CAMERA MOT (**)

the standard version, allowing to quickly check and calibrate all ADAS systems based on the camera sensors installed on the vehicle.

CONNEX DIGITAL ADAS CAMERA -RADAR MOT (**)

in addition to the standard scope of delivery, it allows installing the front accessory for the calibration of radar safety systems

CONNEX DIGITAL ADAS THE REVOLUTIONARY SYSTEM MADE IN BRAIN BEE, IS SUPER SIMPLE AND EASY, MAKING MAINTENANCE OF ADAS SYSTEMS ACCESSIBLE TO ALL WORKSHOPS.

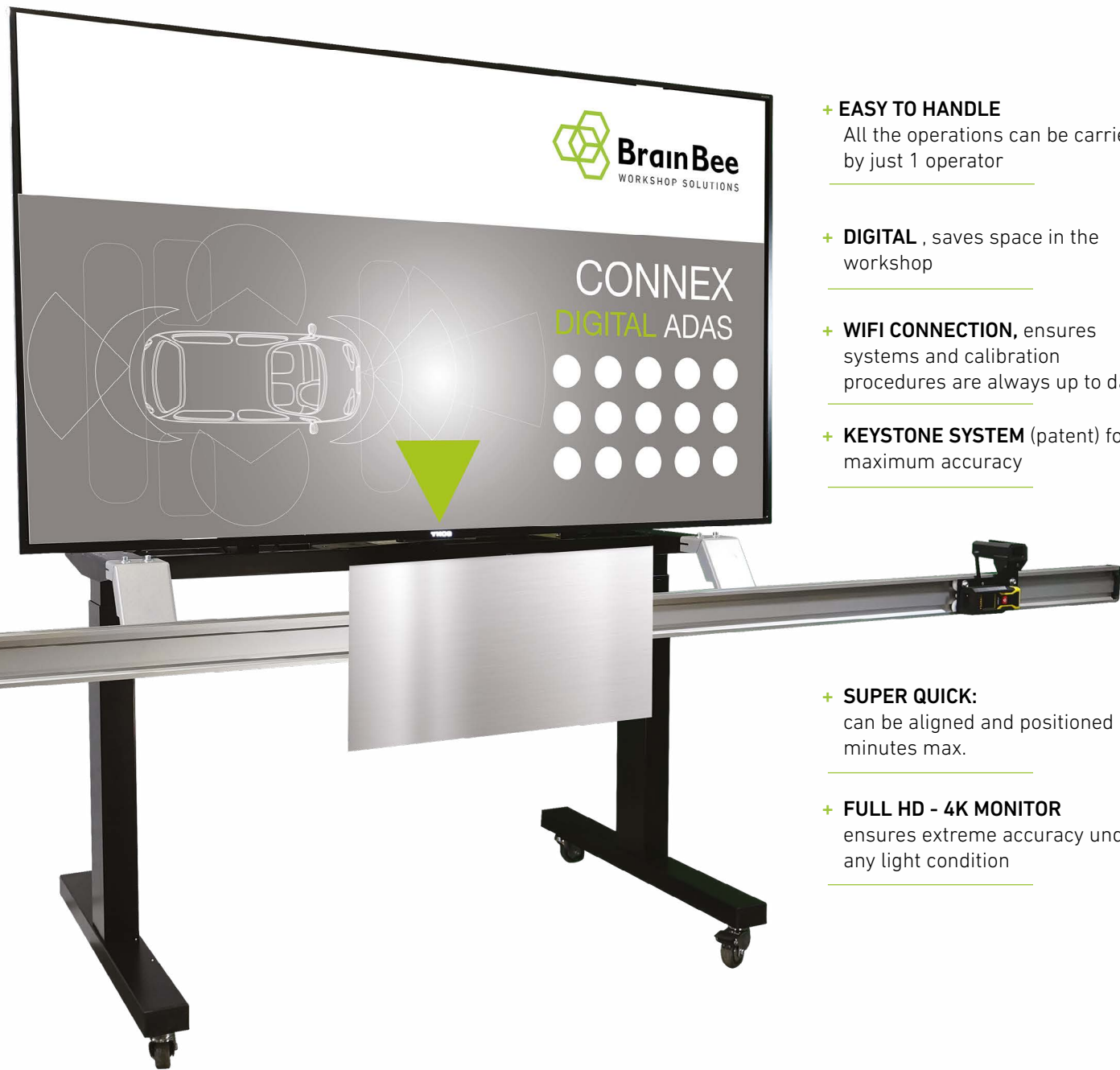
- + Easy to use
- + Simple
- + Universal
- + Accurate results
- + Efficient

With the TARGETLESS DIGITAL SYSTEM (PATENT), no additional panel is required.

(*) Compared to traditional systems

(**) CONNEX BT/SMART and licence not included

// DIGITAL ADAS A REVOLUTION IN THE WORKSHOP



- + **EASY TO HANDLE**
All the operations can be carried out by just 1 operator
- + **DIGITAL**, saves space in the workshop
- + **WIFI CONNECTION**, ensures systems and calibration procedures are always up to date
- + **KEYSTONE SYSTEM** (patent) for maximum accuracy

- + **SUPER QUICK:**
can be aligned and positioned in 5 minutes max.
- + **FULL HD - 4K MONITOR**
ensures extreme accuracy under any light condition

// CALIBRATION CAN BE COMPLETED IN JUST 6 STEPS

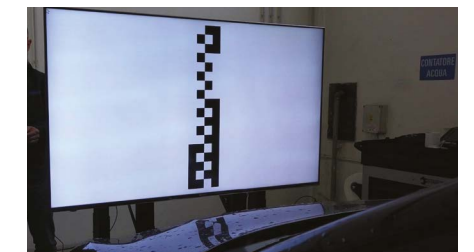
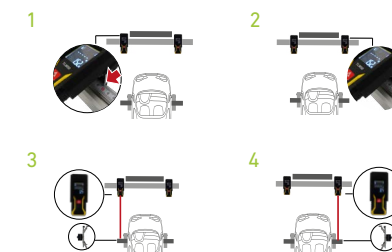
1. IN CONNEX, SELECT MAKER - CAR MODEL. THEN SELECT "DIGITAL ADAS": THE ON-LINE HELP POPS UP, WITH INSTRUCTIONS ON HOW THE CAR SHOULD BE POSITIONED.
2. PLACE THE WHEEL CLAMPS ON THE FRONT WHEELS, AS INDICATED IN THE ON-LINE HELP INSTRUCTIONS.
3. PLACE THE DIGITAL TARGET CLOSE TO THE CAR: THE SPECIAL SUPPORT FRAME MAKES HANDLING EXTREMELY EASY.



4. ENTER THE REQUIRED VALUES, USING THE TWO LASER DISTANCE METERS. THESE ARE THE PARAMETERS REQUIRED TO EXECUTE THE KEYSTONE FUNCTION.

5. ADJUST THE HEIGHT AS INDICATED IN THE ON-LINE HELP INSTRUCTIONS. IT IS VERY SIMPLE AND EASY VIA THE REMOTE CONTROL AND THE MOTORIZED SLIDING CARRIAGE.

6. THE CALIBRATION STARTS. THE MONITOR WILL SHOW THE TARGET, ADAPTING IT TO THE CAR POSITION, AND THEREFORE ENSURING THE MOST ACCURATE RESULT.



WHY YOU SHOULD CHOOSE BRAIN BEE DIGITAL ADAS



TARGETLESS TECHNOLOGY

It's MAHLE patented *targetless* technology, the core element of the system. The versatility of the digital panel allows adapting the screen to any existing or future car makers reference protocol.



EASY TO USE

It is so simple to use that you won't waste any time trying to learn or just using it: the system will guide you through all the steps of the calibration procedure.



FULLY AUTOMATIC

The calibration frame is adjusted automatically, through the electric control, and any movement of the target, in relation to the car, is automatic and virtual. The car never moves!



KEYSTONE SYSTEM

Extreme accuracy is guaranteed by the self-adaptive system, which allows the software to evaluate the environmental and physical conditions (floor, distance from vehicle) and adapt the digital target image accordingly.



UNIVERSAL COVERAGE

Ensuring the largest market coverage is very important to us. The database that's behind the operation of DIGITAL ADAS follows the constant development of CONNEX self-diagnosis.

// DIGITAL ADAS CAMERA MOT 1010601591XX

	FRONT CAMERA	NIGHTVISION	REAR CAMERA	BLIND SPOT	360° CAMERA
ALFA-ROMEO	■	--	--	--	--
AUDI	■	--	■ (1010601612XX)	--	■ (1010601610XX)
BMW	■	--	--	--	--
CITROEN	■	--	--	--	--
FIAT	■	--	--	--	--
FORD	■	--	--	--	--
HONDA	■	--	--	■ (1010601608XX)	--
HYUNDAI	■	--	--	■ (1010601607XX)	--
JEEP	■	--	--	//	--
KIA	■	--	--	■ (1010601607XX)	--
MAZDA	■	--	--	■ (1010601607XX)	--
MERCEDES-BENZ	■	■ (1010601609XX)	■ (1010601613XX) ■ (1010601614XX)	--	--
MINI	■	--	--	--	--
NISSAN	■	--	--	--	--
OPEL	■	--	--	--	--
PEUGEOT	■	--	--	--	--
RENAULT	■	--	--	--	■ (1010601611XX)
SEAT	■	--	■ (1010601612XX)	--	■ (1010601610XX)
SKODA	■	--	■ (1010601612XX)	--	■ (1010601610XX)
SMART	■	--	--	--	■ (1010601611XX)
SUBARU	■	--	--	■ (1010601608XX)	--
TOYOTA	■	--	--	■ (1010601608XX)	--
VOLKSWAGEN	■	--	■ (1010601612XX)	--	■ (1010601610XX)
VOLVO	■	--	--	--	--

// DIGITAL ADAS CAMERA RADAR MOT 1010601594XX

	FRONT CAMERA	FRONT RADAR	NIGHTVISION	REAR CAMERA	BLIND SPOT	360° CAMERA
ALFA-ROMEO	■	■	--	--	--	--
AUDI	■	■	--	■ (1010601612XX)	--	■ (1010601610XX)
BMW	■	■	--	--	--	--
CITROEN	■	■	--	--	--	--
FIAT	■	■	--	--	--	--
FORD	■	■	--	--	--	--
HONDA	■	■ (1010601608XX)	--	--	■ (1010601608XX)	--
HYUNDAI	■	■ (1010601607XX)	--	--	■ (1010601607XX)	--
JEEP	■	■ (1010601617XX)	--	--	//	--
KIA	■	■ (1010601607XX)	--	--	■ (1010601607XX)	--
MAZDA	■	■ (1010601607XX)	--	--	■ (1010601607XX)	--
MERCEDES-BENZ	■	■ (1010601615XX)	■ (1010601609XX)	■ (1010601613XX) ■ (1010601614XX)	--	--
MINI	■	■	--	--	--	--
NISSAN	■	■	--	--	--	--
OPEL	■	■	--	--	--	--
PEUGEOT	■	■	--	--	--	--
RENAULT	■	■	--	--	--	■ (1010601611XX)
SEAT	■	■	--	■ (1010601612XX)	--	■ (1010601610XX)
SKODA	■	■	--	■ (1010601612XX)	--	■ (1010601610XX)
SMART	■	■	--	--	--	■ (1010601611XX)
SUBARU	■	■ (1010601608XX)	--	--	■ (1010601608XX)	--
TOYOTA	■	■ (1010601608XX)	--	--	■ (1010601608XX)	--
VOLKSWAGEN	■	■	--	■ (1010601612XX)	--	■ (1010601610XX)
VOLVO	■	■ (1010601616XX)	--	--	--	--

■ FUNCTION PRESENT ■ KIT REQUIRED (CODE) -- SYSTEM NOT PRESENT ON VEHICLE

Features:

- + Patented TARGETLESS technology
- + Integrated communication with NEXUS 3.0 BUS system via WiFi
- + Motorized target height adjustment
- + Adaptive system for automatic compensation of vehicle positioning
- + Measurement via high precision laser distance meters
- + Ultralight radar calibration panel

Technical information:

- + Dimensions: 2700 x 1500 x 1800 mm
- + Weighs 75 kg
- + 65" full HD monitor
- + Integrated control PC, Windows 10

Accessories for specific calibrations available in catalogue



MAHLE AFTERMARKET
ITALY S.P.A.
 via Quasimodo, 4/A
 43126 Parma
 Italy
 Tel. +39 0521 954411
 Fax +39 0521 954490
 info.aftermarket@it.mahle.com

MAHLE AFTERMARKET
IBERICA S.A.U.
 Carrer de Saturn, 31
 08228 Terrassa (BCN)
 Spain
 Tel. +34 93 731 3802
 Fax +34 93 786 2476
 administracion.iberica@es.mahle.com

MAHLE AFTERMARKET
DEUTSCHLAND GmbH
 Dürreheimer Straße 49a
 78166 Donaueschingen
 Germany
 Tel. +49 771 8979550
 Fax +49 771 897955-90
 info.de@brainbee.com

www.brainbee.mahle.com

MAHLE